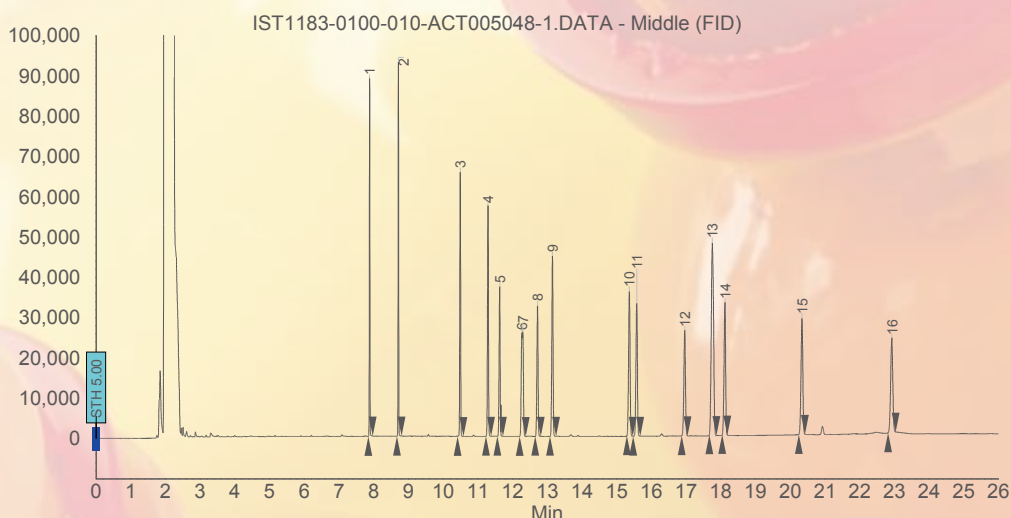




First Standard
Analytical Reference Standards
分析检测标准品

邻苯二甲酸酯标准参照物



产品介绍

邻苯二甲酸酯是常用的塑料添加剂，又称增塑剂，广泛添加于日用及工业的高分子塑胶产品的生产，如玩具、食品包装材料、医用血袋和胶管、清洁剂、润滑油、个人护理用品、乙烯地板和壁纸等。研究表明，长期接触大剂量的邻苯二甲酸酯可能导致内分泌失调、代谢干扰、先天畸形、生殖障碍等。国家质检总局《GB/T 20388-2006 纺织品 - 邻苯二甲酸酯的测定》、《GB/T 21911-2008 食品中邻苯二甲酸酯的测定》、《GB/T 21928-2008 食品塑料包装材料中邻苯二甲酸酯的测定》制定了一系列邻苯二甲酸酯的检测方法。为积极配合国标的实施，美国 A Chemtek 公司联合阿尔塔科技有限公司以及国内最具实力的研发和分析检测中心，开发出上千种标准品参照物、标准溶液、混合标准溶液，符合国标中标准参照物的质量要求，质量与国际知名品牌同类产品相媲美，并为顾客提供个性化服务。

质量保证

- 标准品由美国 A ChemTek 公司研发
- 产品附带质量检验报告 (COA)、安全技术说明书 (MSDS)
- 储备液、工作液进口安瓿瓶封装，安全方便
- 完整的生产、质检、储存、运输记录，可溯源
- 标准品通过 LCMS/GCMS、NMR 等严格检测，质量稳定可靠
- 严格按照 ISO9001、ISO17025、Guide 34 质量标准执行
- 标准溶液通过 LCMS/GCMS 或其他检测，均匀性稳定性良好

天津阿尔塔科技有限公司

公司地址：天津经济技术开发区第四大街 80 号，天大科技园 C5 楼 405 室 邮编：300457

电话：(0086) 22-6537-8550; 185-2256-9193; 185-2256-9194

传真：(0086) 22-2532-9655

邮箱：sales@altascientific.com 网址：www.altascientific.com.cn

QQ：2850791070, 2850791074



© Alta Scientific Co., Ltd.
Version 201603



订货指南

产品编号	中文名称	英文名称	CAS#	包装规格
1ST1111	邻苯二甲酸丁苄酯(BBP)	Benzyl n-butyl phthalate	85-68-7	100mg,1000ppm
1ST1112	邻苯二甲酸二苄酯	Diphenyl phthalate	84-62-8	100mg,1000ppm
1ST1113	邻苯二甲酸二丁氧基乙酯	Bis(2-butoxyethyl) phthalate	117-83-9	100mg,1000ppm
1ST1114	邻苯二甲酸二丁酯	Di-n-butyl phthalate	84-74-2	100mg,1000ppm
1ST1115	邻苯二甲酸二环己酯	Dicyclohexyl phthalate	84-61-7	100mg,1000ppm
1ST1116	邻苯二甲酸二甲酯(DMP)	Dimethyl phthalate	131-11-3	100mg,1000ppm
1ST1117	邻苯二甲酸二戊酯(DPP)	Di-n-pentyl phthalate	131-18-0	100mg,1000ppm
1ST1118	邻苯二甲酸二乙酯(DEP)	Diethyl phthalate	84-66-2	100mg,1000ppm
1ST1119	邻苯二甲酸二异丁酯(DIBP)	Diisobutyl phthalate	84-69-5	100mg,1000ppm
1ST1120	邻苯二甲酸二正己酯(DNHP)	Di-n-hexyl phthalate	84-75-3	100mg,1000ppm
1ST1121	邻苯二甲酸二正辛酯(DNOP)	Di-n-octyl phthalate	117-84-0	100mg,1000ppm
1ST1122	邻苯二甲酸双(2-甲氧基乙)酯	Bis(2-methoxyethyl) phthalate	117-82-8	100mg,1000ppm
1ST1123	邻苯二甲酸双(2-乙氧基乙)酯	Bis(2-ethoxyethyl) phthalate	605-54-9	100mg,1000ppm
1ST1124	邻苯二甲酸双(4-甲基-2-戊)酯	Bis(4-methyl-2-pentyl) Phthalate	146-50-9	100mg,1000ppm
1ST1125	邻苯二甲酸双(2-乙基己)酯	Bis(2-ethylhexyl) phthalate	117-81-7	100mg,1000ppm
1ST1126	邻苯二甲酸二壬酯	Di-n-nonyl phthalate	84-76-4	100mg,1000ppm
1ST1127	邻苯二甲酸二丙酯(DPP)	Dipropyl phthalate	131-16-8	100mg,1000ppm
1ST1128	邻苯二甲酸二异辛酯(DIOP)	Diisooctyl phthalate	27554-26-3	100mg,1000ppm
1ST1129	邻苯二甲酸二异壬酯(DINP)	Diisononyl phthalate	28553-12-0	100mg,1000ppm
1ST1130	邻苯二甲酸二异癸酯(DIDP)	Diisodecyl phthalate	26761-40-0	100mg,1000ppm
1ST1131	邻苯二甲酸二烯丙酯	Diallyl phthalate	131-17-9	100mg,1000ppm
1ST1132	邻苯二甲酸二癸酯	Didecyl phthalate	84-77-5	100mg,1000ppm
1ST1133	邻苯二甲酸二苄酯	Dibenzyl phthalate	523-31-9	100mg,1000ppm
1ST1134	邻苯二甲酸双庚酯	Dihept-1-yl phthalate	3648-21-3	100mg,1000ppm
1ST1135	邻苯二甲酸单甲酯	Methyl hydrogen phthalate	4376-18-5	100mg,1000ppm
1ST1137	邻苯二甲酸二庚酯(支链异构体类的混合物)	Diheptyl Phthalate (Mixture of branched chain isomers)	41451-28-9	100mg,1000ppm
1ST1138	(-)-单-(1R)-邻苯二甲酸薄荷酯	(-)-Mono-(1R)-Menthyl phthalate	33744-74-0	100mg,1000ppm
1ST1139	邻苯二甲酸氢叔丁酯	Tert-butyl hydrogen phthalate	33693-84-4	100mg,1000ppm
1ST1140	邻苯二甲酸二异庚酯	Diisoheptyl phthalate	71888-89-6	100mg,1000ppm
1ST1141	邻苯二甲酸二异丙酯	Diisopropyl phthalate	605-45-8	100mg,1000ppm
1ST1142	邻苯二甲酸苄酯2-乙基己酯	Benzyl 2-ethylhexyl phthalate	27215-22-1	100mg,1000ppm
1ST1183-100H	16种邻苯二甲酸酯混标, 1 ml 正己烷溶液, 含以下品种各100ug/ml: 1ST1111, 1ST1112, 1ST1113, 1ST1114, 1ST1115, 1ST1116, 1ST1117, 1ST1118, 1ST1119, 1ST1120, 1ST1121, 1ST1122, 1ST1123, 1ST1124, 1ST1125, 1ST1126	16 Phthalate Mix Kit, 1 ml in Hexane, 1 ampoule / pk, 100ug /ml each component: 1ST1111, 1ST1112, 1ST1113, 1ST1114, 1ST1115, 1ST1116, 1ST1117, 1ST1118, 1ST1119, 1ST1120, 1ST1121, 1ST1122, 1ST1123, 1ST1124, 1ST1125, 1ST1126	NA	100ppm
1ST1183-1000H	16种邻苯二甲酸酯混标, 1 ml 正己烷溶液, 含以下品种各1000ug/ml: 1ST1111, 1ST1112, 1ST1113, 1ST1114, 1ST1115, 1ST1116, 1ST1117, 1ST1118, 1ST1119, 1ST1120, 1ST1121, 1ST1122, 1ST1123, 1ST1124, 1ST1125, 1ST1126	16 Phthalate Mix Kit, 1ml in Hexane, 1 ampoule / pk, 1000ug /ml each component: 1ST1111, 1ST1112, 1ST1113, 1ST1114, 1ST1115, 1ST1116, 1ST1117, 1ST1118, 1ST1119, 1ST1120, 1ST1121, 1ST1122, 1ST1123, 1ST1124, 1ST1125, 1ST1126	NA	1000ppm
1ST1184-1000M	6种邻苯二甲酸酯混标, 1ml 甲醇溶液, 含以下品种各1000ug/ml: 1ST1111, 1ST1114, 1ST1116, 1ST1118, 1ST1121, 1ST1123	6 Phthalate Mix Kit, 1ml in Methanol, 1 ampoule / pk, 1000ug /ml each component: 1ST1111, 1ST1114, 1ST1116, 1ST1118, 1ST1121, 1ST1123	NA	1000ppm
1ST1185-1000M	14种邻苯二甲酸酯混标, 1ml 甲醇溶液, 含以下品种各1000ug/ml: 1ST1111, 1ST1112, 1ST1113, 1ST1114, 1ST1115, 1ST1116, 1ST1117, 1ST1118, 1ST1119, 1ST1120, 1ST1121, 1ST1122, 1ST1123, 1ST1124	14 Phthalate Mix Kit, 1ml in Methanol, 1 ampoule / pk, 1000ug /ml each component: 1ST1111, 1ST1112, 1ST1113, 1ST1114, 1ST1115, 1ST1116, 1ST1117, 1ST1118, 1ST1119, 1ST1120, 1ST1121, 1ST1122, 1ST1123, 1ST1124	NA	1000ppm
1ST1187-1000H	21种邻苯二甲酸酯混标溶液, 1 ml 正己烷溶液, 含以下品种各1000ug/ml: 1ST1111, 1ST1112, 1ST1113, 1ST1114, 1ST1115, 1ST1116, 1ST1117, 1ST1118, 1ST1119, 1ST1120, 1ST1121, 1ST1122, 1ST1123, 1ST1124, 1ST1125, 1ST1126, 1ST1127, 1ST1129, 1ST1130, 1ST1131, 1ST1141	21 Phthalate Mix Solution, 1ml in Hexane, 1 ampoule / pk, 1000ug /ml each component: 1ST1111, 1ST1112, 1ST1113, 1ST1114, 1ST1115, 1ST1116, 1ST1117, 1ST1118, 1ST1119, 1ST1120, 1ST1121, 1ST1122, 1ST1123, 1ST1124, 1ST1125, 1ST1126, 1ST1127, 1ST1129, 1ST1130, 1ST1131, 1ST1141	NA	1000ppm